

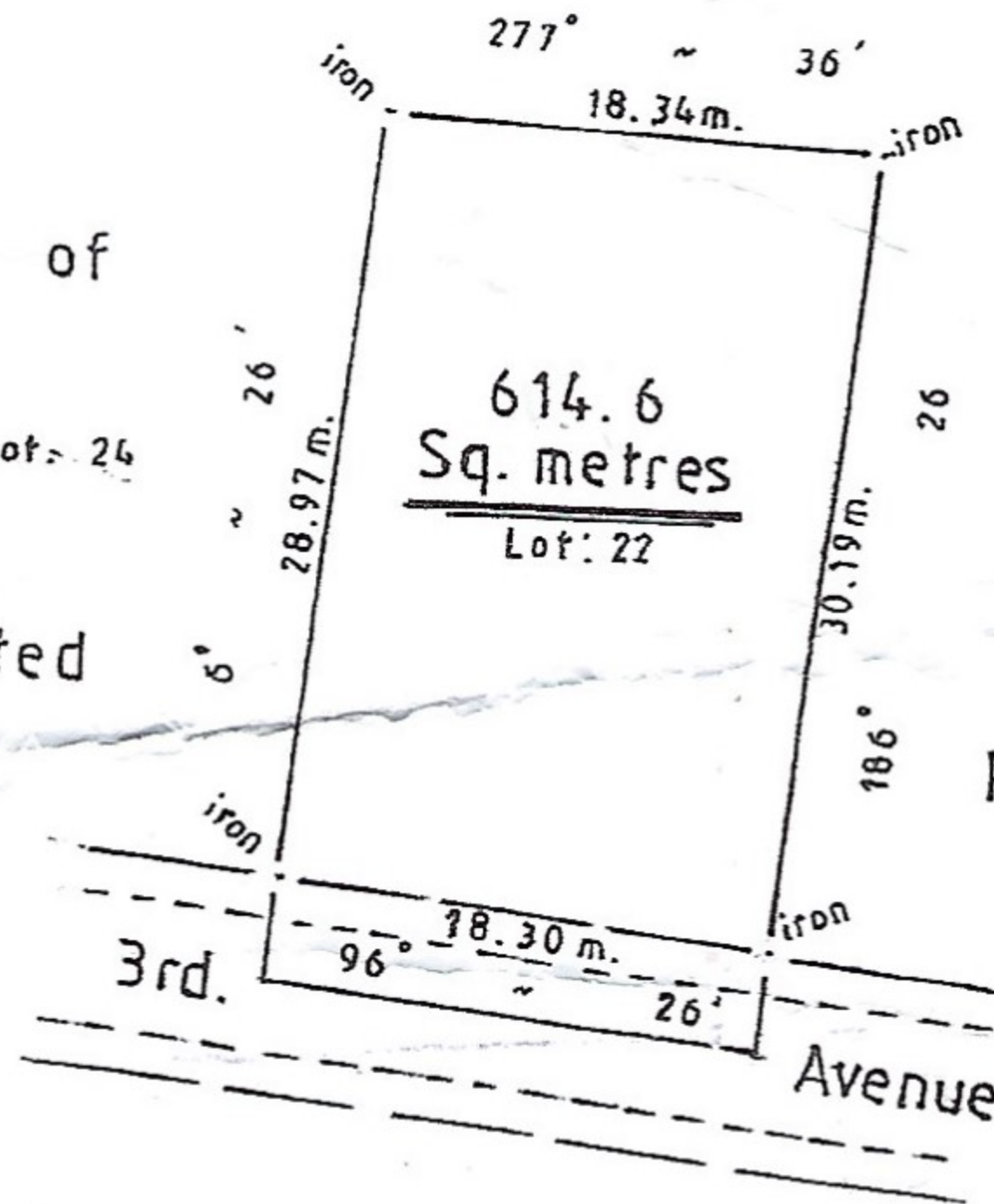


Now or formerly
Oldbury Plantation

Other lands of

Lot: 24

Knitwear Limited



Other lands of

Lot: 20

Knitwear Limited

NOTES:

614.6 Sq metres
= 6615.49 S.F.

TOWN & COUNTRY DEVELOPMENT
PLANNING OFFICE
APPROVED PLAN

NUMBER 656/3/252

DATE 2001-5-3

[Signature]
CHIEF TOWN PLANNER

Barbados

PLAN OF LAND

at Oldbury, Sr. Philip.
containing Land 541.4 Sq. metres
Veræ 27.5 " "

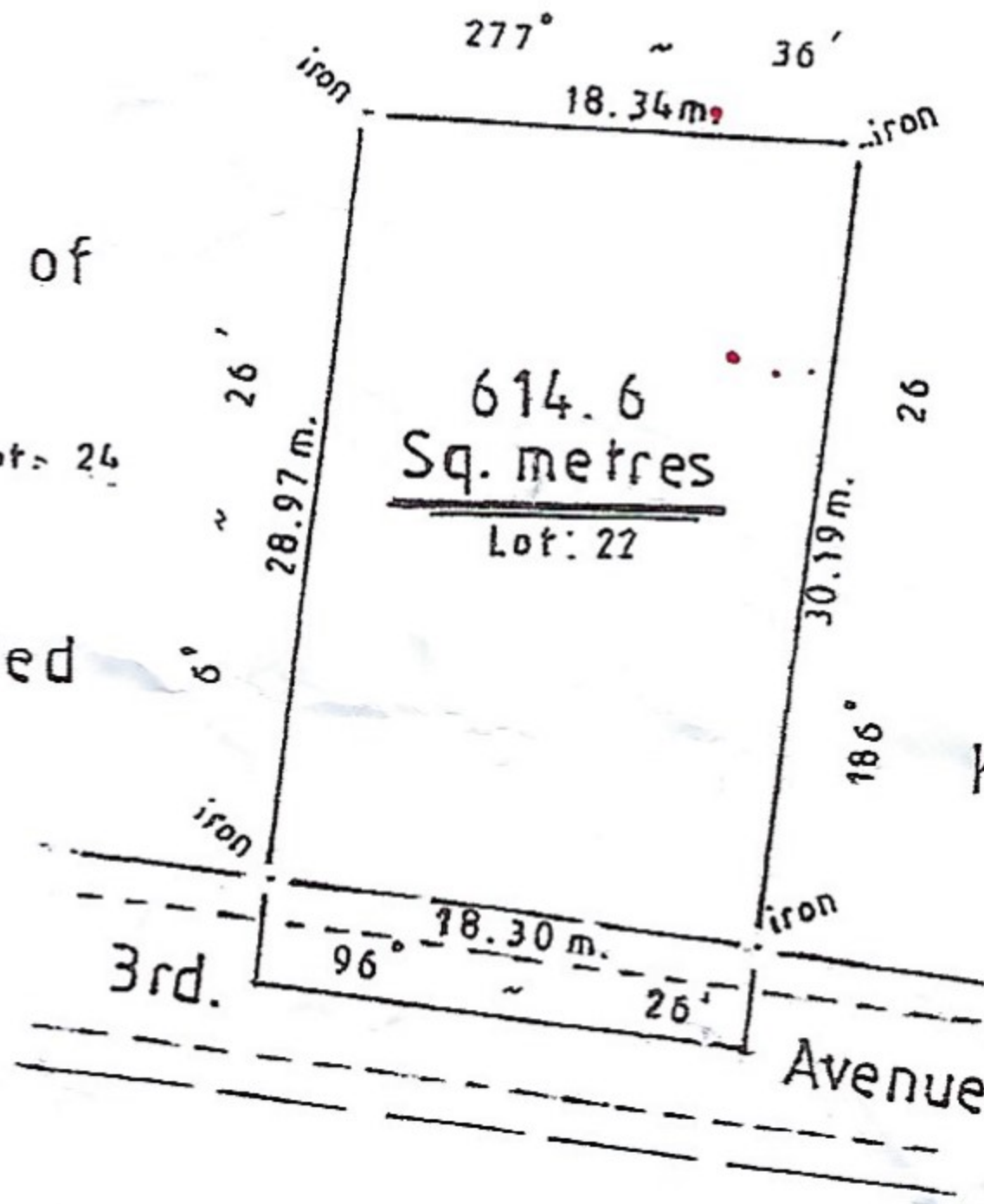
SCALE 1/500

Distances are in metres
Bearings are referred to Grid North
derived from a survey recorded at
D.L.S. No. 826/82.

Other lands of

Lot: 24

Knitwear Limited



Other lands of

Lot: 20

Knitwear Limited

TOWN & COUNTRY DEVELOPMENT
 PLANNING OFFICE
 APPROVED PLAN

NUMBER 656/3/88D

DATE 2001-5-3

[Signature]
 CHIEF TOWN PLANNER

Barbados

PLAN OF LAND

at Oldbury, St. Philip.

containing	Land	541.4	Sq. metres
	Verge	27.5	" "
	C'way	45.7	" "
	Total	614.6	" "

surveyed for Knitwear Limited.

Certified 3 March 1988

[Signature]
 Land Surveyor

SCALE 1/500

Distances are in metres
 Bearings are referred to Grid North
 derived from a survey recorded at
 D.L.S. No. 824/82.

For Lands and Surveys Dept. only