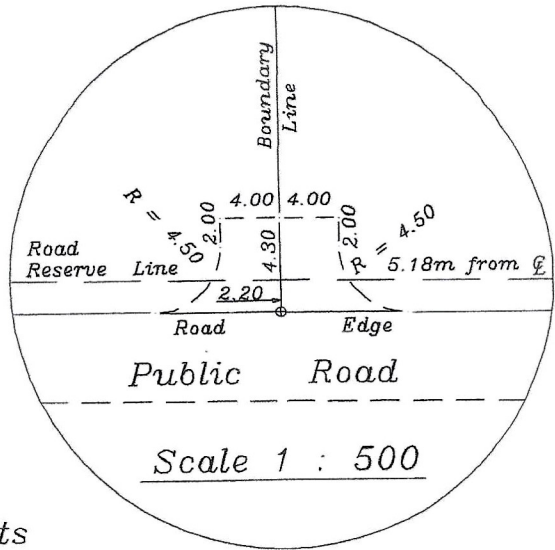
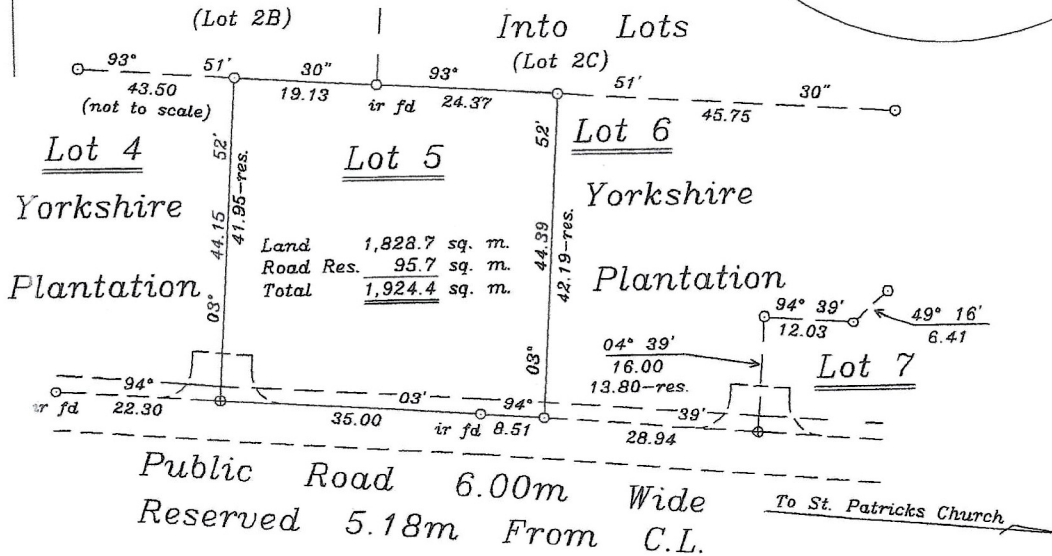


Typical Detail of Dual Access



Formerly
Yorkshire Plantation
Now Subdivided



Barbados

PLAN OF LAND Bordered Green & Road Reserve Coloured Brown

at Yorkshire Plantation, Christ Church

containing

Land	1,828.7 sq. metres
Road Res.	95.7 sq. metres
Total	<u>1,924.4 sq. metres</u>

surveyed for Yorkshire Plantation

Certified 22nd December 2008

Kenneth D. Ward
Kenneth D. Ward
Land Surveyor
Kona Inc.

SCALE 1:1000

Distances are in metres
Bearings are referred to Grid North
derived from previous survey by me.

- o Denotes iron put unless stated otherwise
- ⊕ Denotes a cut in concrete.

T.C.P.O. App. No. 3090/10/05D

For Lands and Surveys Dept. only